

Deadline: August 23, 2019, 9:00 PM ET
Grant Notification: October 2019
Grant Period: January 1, 2020-June 30, 2021

2020 PERFORMANCE PLUS

*Performance Plus Program is made possible through the
generosity of the Doris Duke Charitable Foundation*

Chamber
Music
America



Nicole Mitchell
Flutist-Composer
NJW 2006

This Program Supports

- Professional, female-led U.S. Jazz Ensembles consisting of 2-10 ensemble members.
- Six evaluative Listening Sessions with an experienced jazz Artist-Educator.
- High quality demo recording.



A Jazz Ensemble is Eligible if:

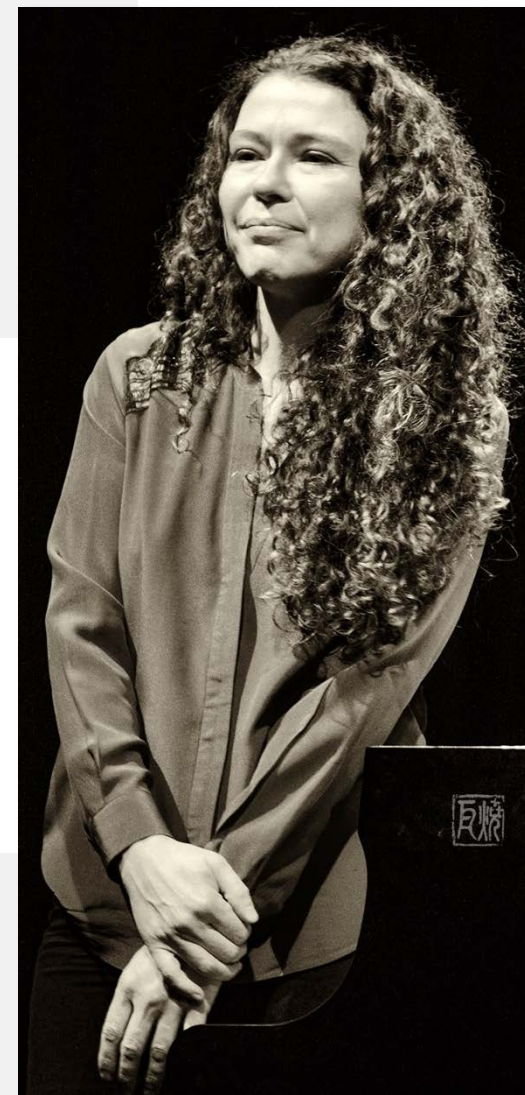
- based in the U.S. or its territories;
- consists of 2-10 professional musicians (student groups are not eligible);
- includes improvisation as an integral part of its composition and performance;
- the leader is a female identifying U.S. citizen or permanent resident;
- CMA organization-level member;
- has no overdue reports or financial obligations to CMA.



Grant Cycle

January 2020-June 2021

- Listening sessions must be completed by January 2021.
- Demo Recording must be completed by June 2021.
- Final report due no later than August 31, 2021.



Four Components

- **Ensemble Rehearsal/Listening Sessions:** Six sessions with an artist-educator. Rehearsal fee of \$200 per musician per listening session.
- **Artist-Educator Fees:** (\$3,000) \$500 for the artist-educator for a minimum of 90 minutes of instruction per each of the six sessions.
- **Demo Recording:** (\$6,500) must be used for the purpose of recording a demo of only the works rehearsed in sessions with the artist-educator.
- **CMA National Conference:** Complimentary registration for the ensemble leader to attend the 2020 or 2021 CMA National Conference. Travel/hotel subsidies are available, on a limited basis, for ensemble leaders who live outside the New York metropolitan area.



Funding Breakdown

For example, if your ensemble is a quintet:

Your *Performance Plus* grant = \$15,500

- **\$6000 Ensemble Rehearsal/Listening Sessions**
(Six sessions \$200 per musician per listening session).
- **\$3,000 Artist-Educator Fees**
- **\$6,500 Demo Recording**

Plus one complimentary registration for the ensemble leader to attend the 2020 or 2021 CMA National Conference.



Funding

With the generous support of the Doris Duke Charitable Foundation, CMA offers full support to each grantee (100% of request amount).



Carmen Lundy
Vocalist-Composer
PCJ2018

Preparing Your Application

- Memorandum of Understanding
- Audio Uploads
- Application Form - Submittable

Uploads Contd.

Audio Files

- Submit two files—Audio 1 and 2 for Ensemble Work Samples.
- Each file must feature all or the majority of the personnel - core ensemble - listed in Step 1 of your application.
- Audio samples must demonstrate the ensemble's best performance.
- Original work not required.

Audio Files Contd.

- Each audio file must feature only 1 piece of music.
- Edit and/or excerpt music within a file.
- Edit each file to no longer than 5 minutes in length.
- Feature music from live concert, studio/home recording, and/or commercial disc.
- Format files as mp3 or m4a.
- Provide cue timings for scored and improvised sections (1 example each, in audio summary table).

Application Form

Submittable 

Submittable – Online Application

- Create a free Submittable account or log-in to your existing Submittable account.
- Type directly into the online form or draft your application in an offline document, then copy your responses into the Submittable application.
- Click **SAVE DRAFT** on bottom of application. Submittable maintains your draft for 21 days.

Application Form Contd.

- Save Files as:
 - *Ensemble Name-MOU*
 - *Ensemble Name-Audio 1*
- Upload all required files.
- Check your application form, make sure all fields and sections are filled out.
- When application is complete, click **SUBMIT**.
- CMA will confirm receipt via email.

Panel Process

- Experienced U.S. Jazz artists are invited to review applications and select grantees.
- The panel incorporates several rounds of review; a portion of recommended applicants is advanced after each round.
- The panel takes place in October; applicants are notified by November.



Jamie Baum
Flutist-Composer
NJW2003

Panel Process Contd.

- reason(s) why the ensemble leader believes the listening sessions will benefit her ensemble;
- qualifications of the artist-educator that led to his/her selection;
- reason(s) why the artist-educator is a good match for the ensemble;
- project feasibility including, but not limited to: established timeline, consistent intervals between sessions, and realistic geographic parameters
- artistic and technical strength, and cohesiveness of the ensemble in performing scored and improvised music.



Scoring, Notes and Feedback

- The panel uses a scoring system of 10 (excellent), 4 (good/very good), 1 (non-competitive).
- Panelists make notes on their evaluation sheets.
- Panel feedback is provided by phone.

Proof of Citizenship/ Permanent Residence Status

If your ensemble is awarded a *Performance Plus* grant, the leader will be required to provide proof of citizenship or lawful permanent resident status (green card) for the ensemble leader or composer.

Resources

Performance Plus Grant

<http://www.chamber-music.org/programs/jazz/grants#l731>

Artist-Educator Database

<https://airtable.com/shr9zyyD7vRCtPoES>

Press Room

www.chamber-music.org/about/press-room

Membership Directory

www.chamber-music.org/members/directory

Thank You

Gargi Shindé
Program Director

📞 212 242-2022 Ext 103

✉️ gshinde@chamber-music.org

🌐 www.chamber-music.org



Jane Ira Bloom
Saxophonist/ Clarinetist-Composer
NJW2003